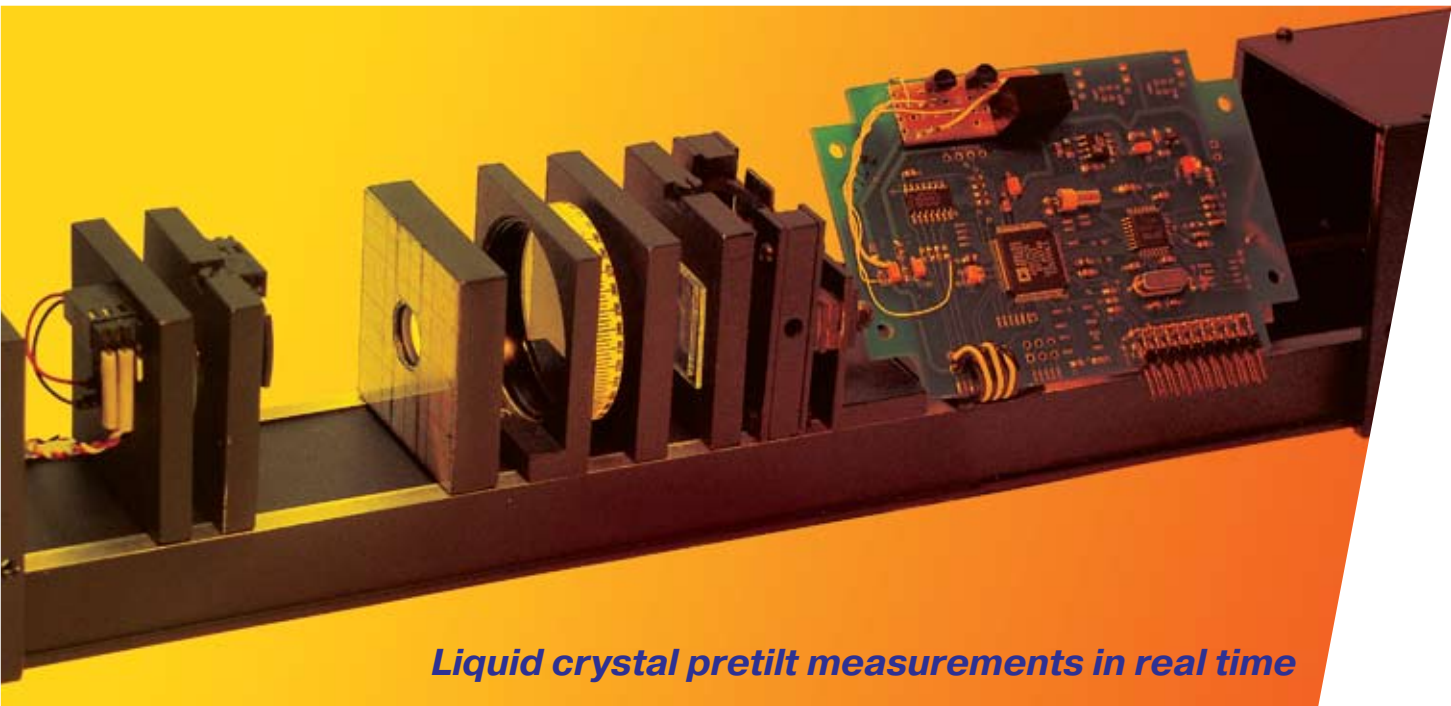




# LC Tiltometre

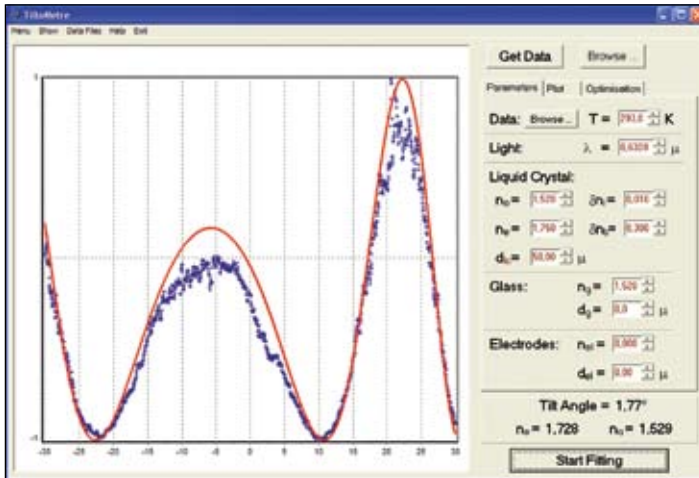


## Liquid crystal pretilt measurements in real time

### ADDITIONAL OPTIONS INCLUDED IN PACKAGE:

(on request)

Main menu of software and an example of measurement of pretilt angle in a homogeneous LCD



### Cell gap

The scheme provides cell gap measurements of empty cell.

### Refractive indices measurements

The scheme provides precise measurements of temperature dependences of ordinary and extraordinary refractive indices of LC material at different wavelength of light.

### Temperature dependences of pretilt angle

The system can be outfitted with a miniature hot-stage to fulfill the measurements of pretilt angle in the range 20 – 120°C with accuracy 0.1°C.

**LC-Tiltometre** allows for the measurements of pretilt angle change in real time, evaluation of the gliding of the easy orientation axes, studies of the memory and sticking effects, etc.

# LC Tiltometre



## Contacts:

[www.lcnet.org.ua](http://www.lcnet.org.ua)

e-mail: [lgtc@iop.kiev.ua](mailto:lgtc@iop.kiev.ua)

## LC-TILTOMETRE WAS DEVELOPED BY

**LCNet** (Institute of Physics, National Academy of Sciences of Ukraine, Kiev, Ukraine)

**CaLCTec** – Calabria Liquid Crystals Technology S.r.l., and **Licryl** – Liquid Crystals Laboratory INFM-CNR (c/o Phys. Dept. University of Calabria, Rende Italy).

## Sponsor:

**INTAS** (innovation Grant No. 05-1000007-432 “Time-resolved liquid crystal tilt measuring system”)

